

# Data Distribution/Ingest

Carissa Klemmer  
NCEP Central Operations  
October 25/26, 2016  
Fall COPC Meeting

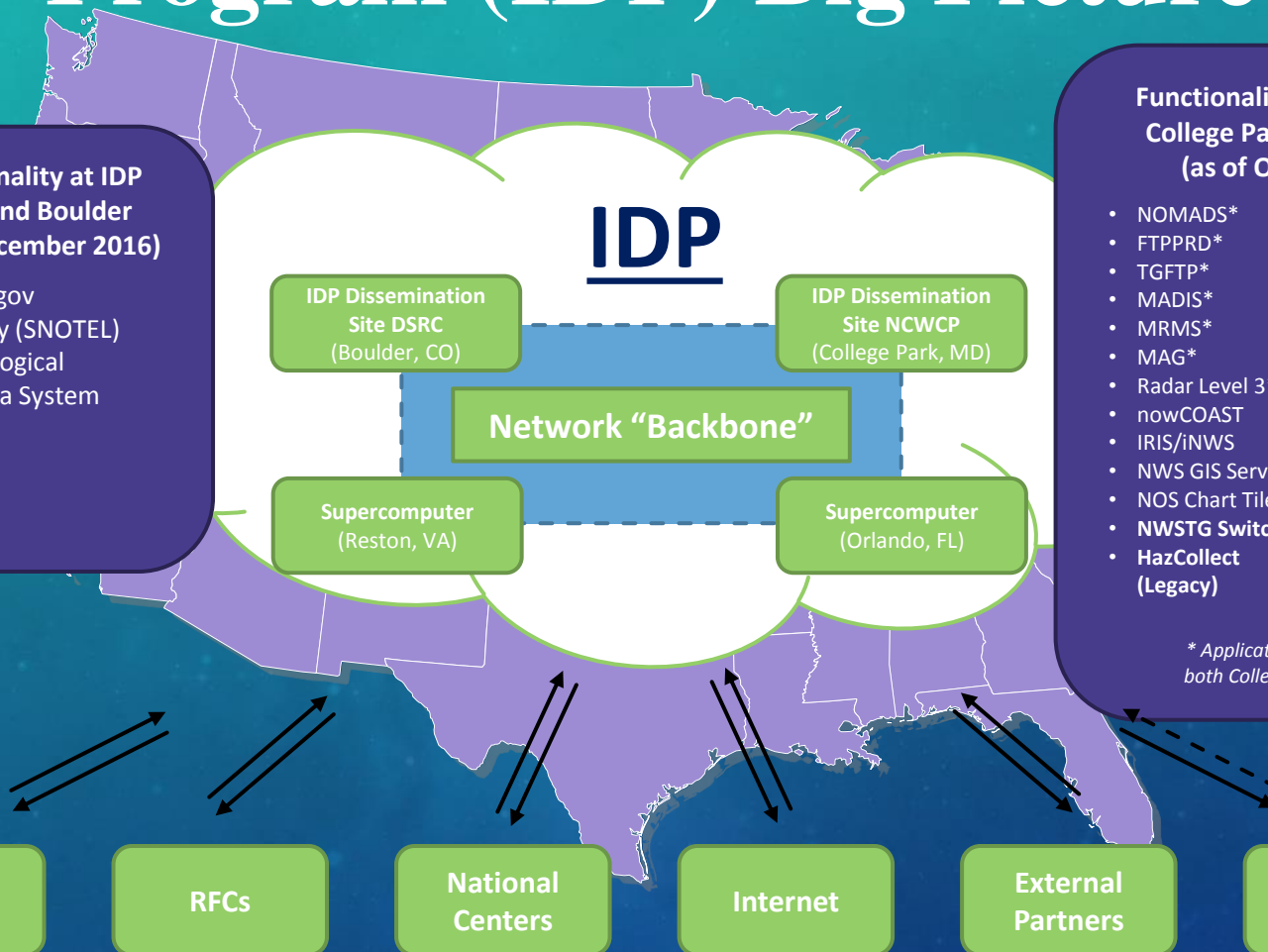


# Integrated Dissemination Program (IDP) Big Picture



## Future Functionality at IDP College Park and Boulder (Expected By December 2016)

- www.weather.gov
- Snow Telemetry (SNOTEL)
- Hydrometeorological Automated Data System (HADS)
- HF-FAX
- SOCKET/CMHP
- NWS Chat



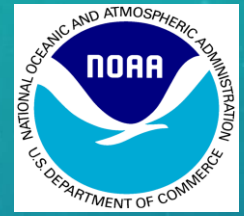
## Functionality in place at IDP College Park and Boulder\* (as of October 2016)

- NOMADS\*
- FTPPRD\*
- TGFTP\*
- MADIS\*
- MRMS\*
- MAG\*
- Radar Level 3\*
- nowCOAST
- IRIS/iNWS
- NWS GIS Services
- NOS Chart Tile
- NWSTG Switch\*
- HazCollect (Legacy)

\* Application operational in both College Park & Boulder

## "OneNWS" Network

The future OneNWS network will consolidate all operational networks (OPSnet, Regional, etc.) as single managed network under NCEP Central Operations (NCO).

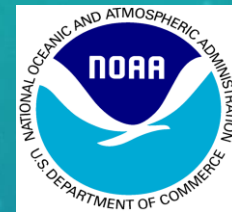


# Site Redundancy

- NCEP is targeting a December 31<sup>st</sup> deadline to obtain two fully redundant, independently functioning, IDP systems
  - The legacy NWSTG/TOC systems had been running out of Silver Spring since 1990, and on October 18<sup>th</sup> they were loaded onto a moving truck headed for Colorado
- Over the years stand alone efforts created weaknesses in the infrastructure which made us vulnerable to major enterprise wide outages
- The concept for IDP was elevated to Congressional levels and it was agreed that a need exists for organizational change and the development of a reliable and scalable NWS dissemination infrastructure to sustain 24 hours/7 days a week (24/7) mission operations



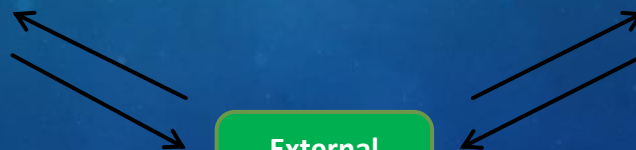
# Site Redundancy – COPC Impacts



- IDP will offer site redundancy for both incoming data and outgoing data
- All IDP partners have been requested to feed both systems independently, including the OPC's
- A dual feed will be extremely important to support the vision of the NWS Telecommunications Gateway
- If partners will not be able to support dual feed it will leave all partners vulnerable to data outages



IDP Dissemination  
Site DSRC  
(Boulder, CO)



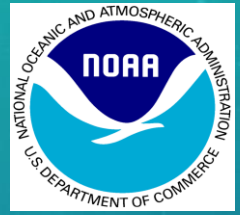
External  
Partners



IDP Dissemination  
Site NCWCP  
(College Park, MD)



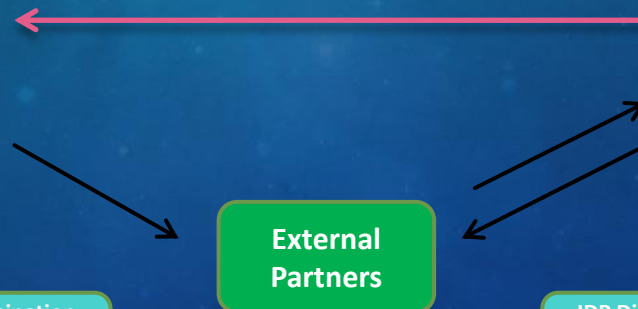
# Site Redundancy – COPC Impacts



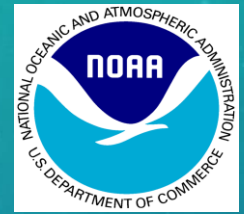
- A single feed will require NCEP to sync the data from the primary to the non-primary
- In the event of an unplanned site outage there would be data loss due to DNS failover limitations
  - Data loss of any type for any OPC can have devastating consequences
- NCEP will be internally evaluating future modification of our architecture to counteract data losses



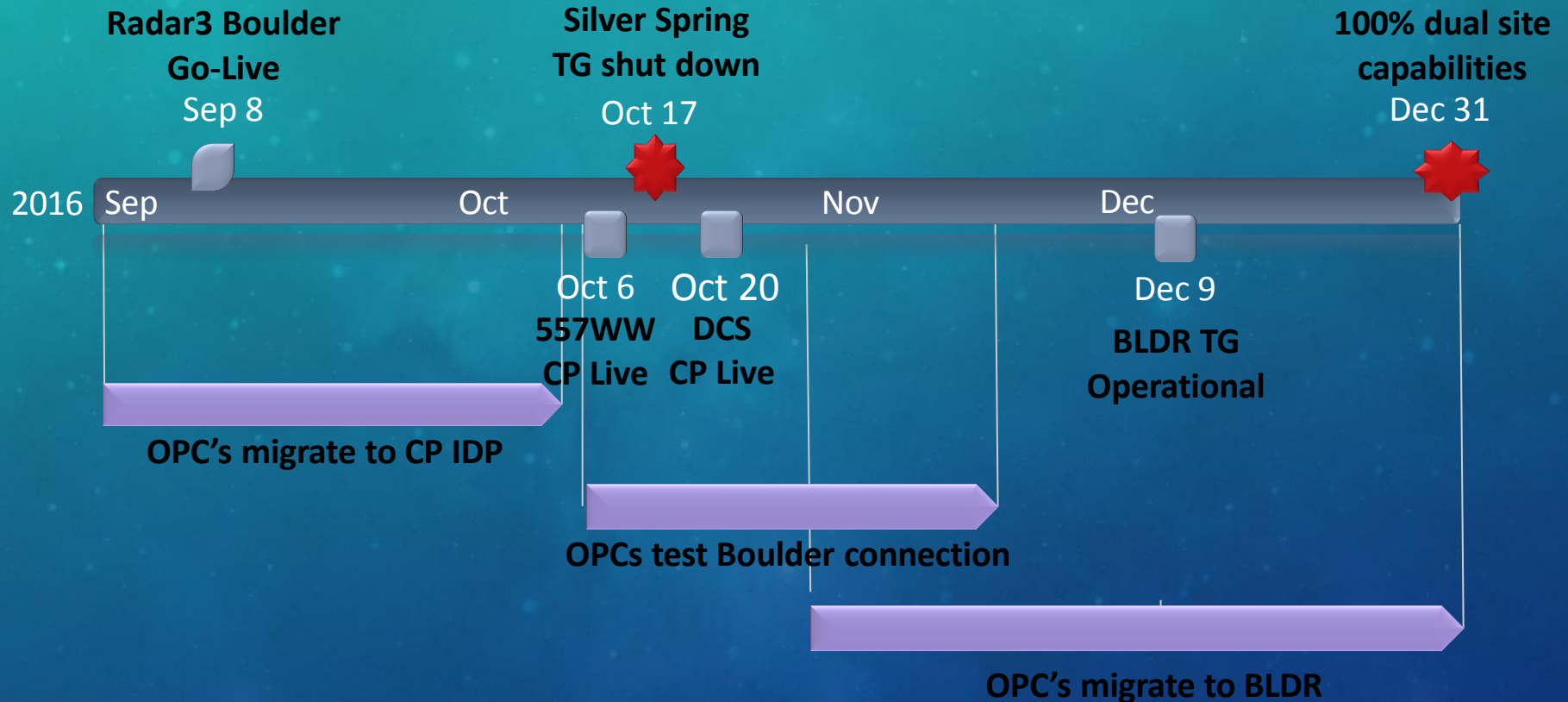
IDP Dissemination  
Site DSRC  
(Boulder, CO)



IDP Dissemination  
Site NCWCP  
(College Park, MD)

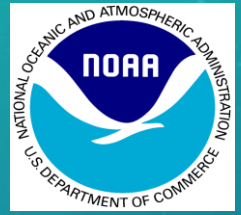


# IDP Timeline

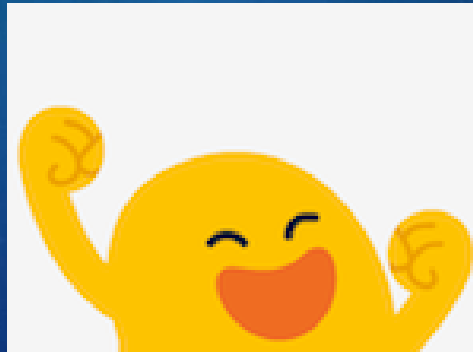




# COPC IDP Status



- FNMOC successfully transitioned to College Park IDP
- NAVOCEAN successfully transitioned to College Park IDP
- 557WW successfully transitioned to College Park IDP
- NESDIS successfully transitioned to College Park IDP
- Boulder stand up is ongoing now with active participation from each OPC



# QUESTIONS ?

